



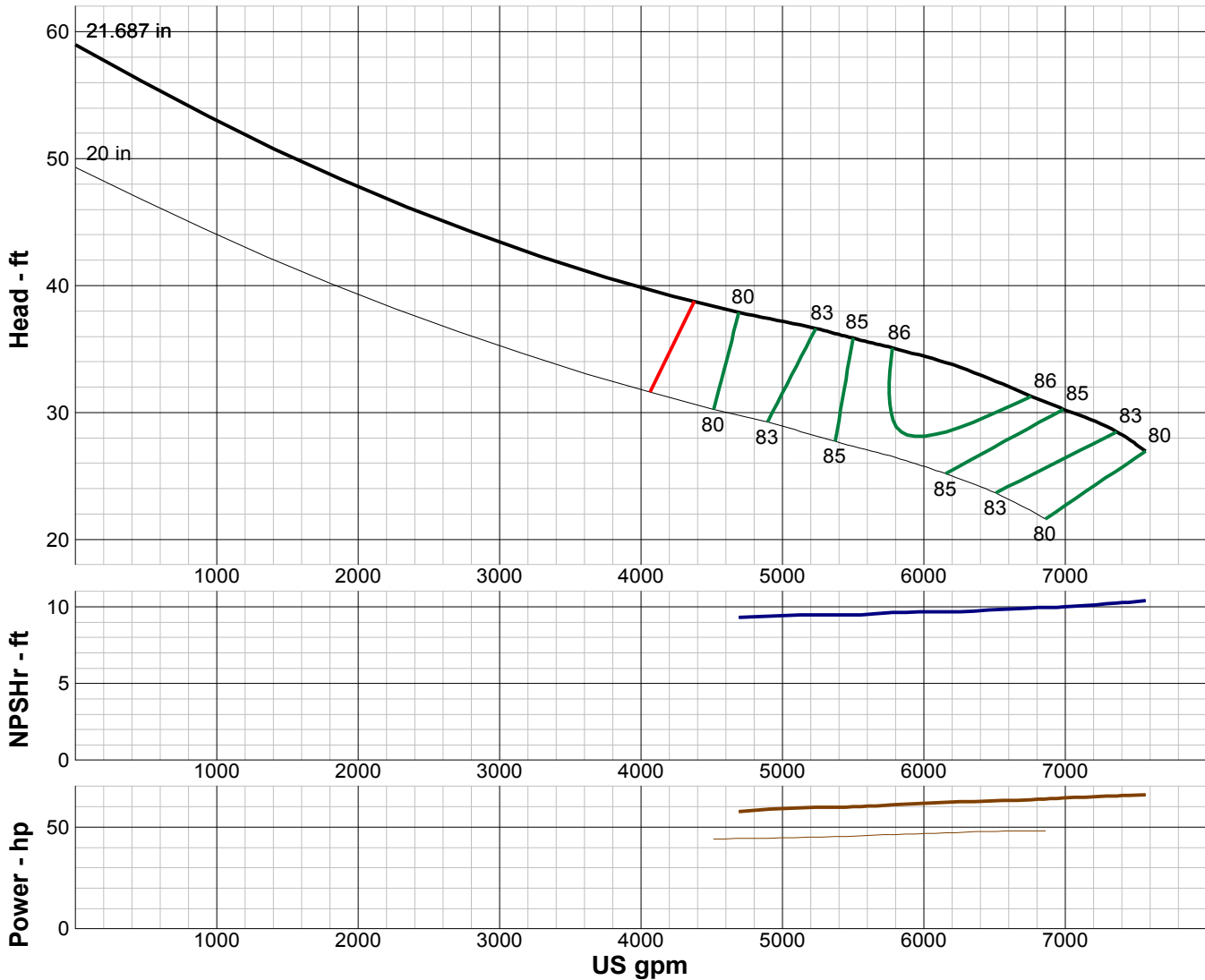
TURBINE PUMP CURVE

SINGLE STAGE PERFORMANCE

JANUARY 2010

480 SERIES

30LC 590 RPM



IMPELLER DATA		
IMPELLER NUMBER	0192	Minimum submergence above eye of bottom impeller: 60 IN.
TYPE	ENCLOSED	
THRUST FACTOR	K=67.50	
EYE AREA	175 SQ. IN.	
WEIGHT	440 LB.	

EFFICIENCY CORRECTION				
NUMBER OF BOWLS:	1	2	3	
CHANGE AS FOLLOWS:	-2	0	+1	
CHANGE IN EFFICIENCY MAY AFFECT BOTH HEAD AND HORSEPOWER.				

PUMP MATERIAL EFFICIENCY CORRECTION				
	DUCTILE	BRONZE	NI-R	STAINLESS
IMPELLER MATERIAL:	-1	0	-1	-1
BOWL MATERIAL:	-1	-1	-1	-2

FLANGED BOWL DATA	
BOWL NUMBER	0235
BOWL MAX. DIAMETER	30.000 IN.
BOWL MIN. DIAMETER	30.000 IN.
MAX. NO. STAGES	5
ONE STAGE WEIGHT	4500 LB.
ADD STAGE WEIGHT	2000 LB.
STD. SHAFT DIA.	3.250 IN.
STD. LATERAL	1.375 IN.
DISCHARGE SIZE	N/A
DISCHARGE CONNECTION	FLG.
SUCTION BELL DIA.	33.250 IN.
SUCTION CONNECTION	BELL
MAX. SPHERE SIZE	2.500 IN.
MAX. OPERATIONAL P.S.I.	250 (SPECIAL)

Performance based on pumping clear, fresh water at a temperature not over 85° F., free of gas, air or abrasives and with bowls properly adjusted and submerged. Performance curve reflects Hydraulic Institute tolerances and guidelines.



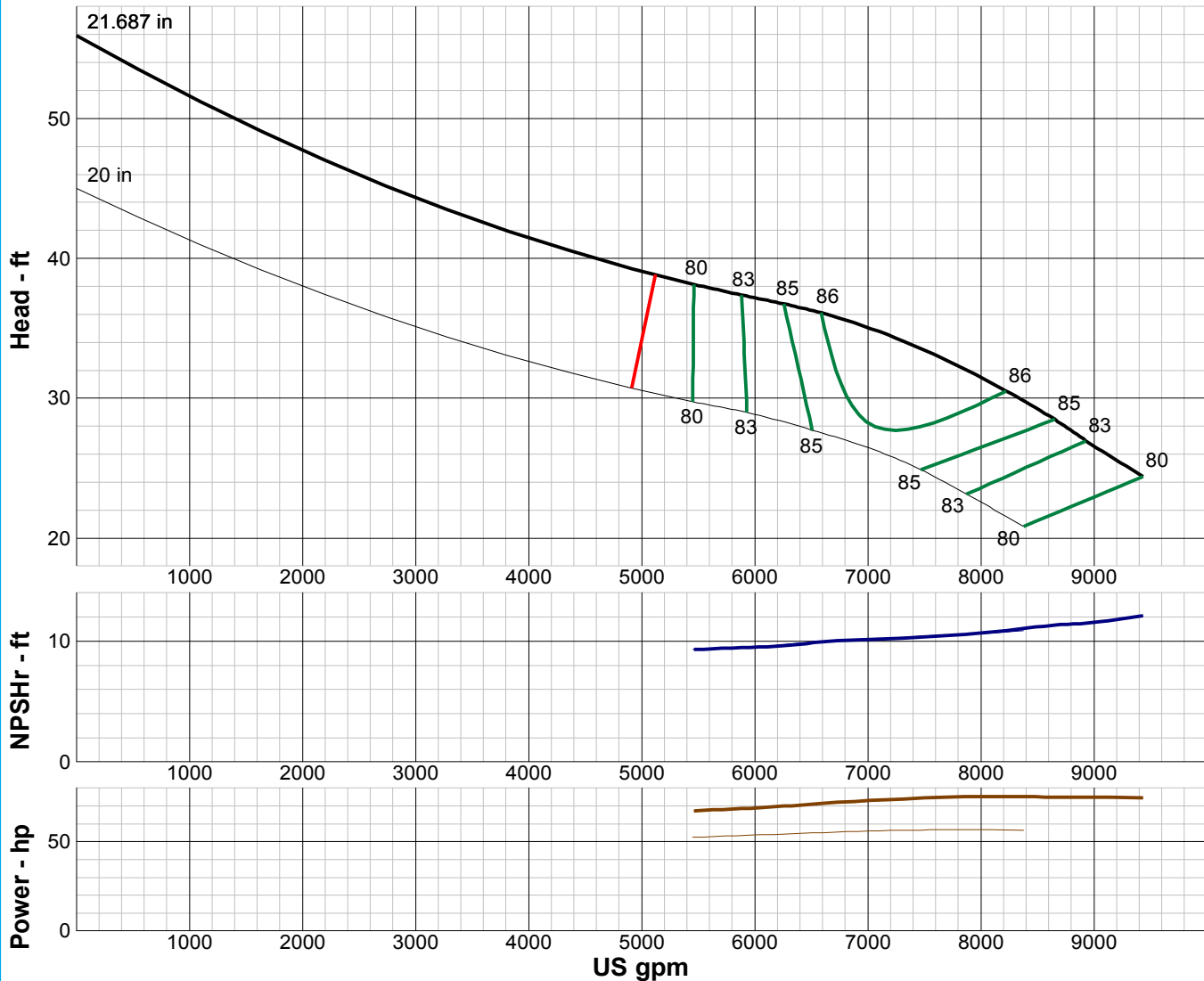
TURBINE PUMP CURVE

SINGLE STAGE PERFORMANCE

JANUARY 2010

480 SERIES

30MC 590 RPM



IMPELLER DATA		
IMPELLER NUMBER	0193	Minimum submergence above eye of bottom impeller: 50 IN.
TYPE	ENCLOSED	
THRUST FACTOR	K=67.50	
EYE AREA	175 SQ. IN.	
WEIGHT	440 LB.	

FLANGED BOWL DATA	
BOWL NUMBER	0235
BOWL MAX. DIAMETER	30.000 IN.
BOWL MIN. DIAMETER	30.000 IN.
MAX. NO. STAGES	5
ONE STAGE WEIGHT	4500 LB.
ADD STAGE WEIGHT	2000 LB.
STD. SHAFT DIA.	3.250 IN.
STD. LATERAL	1.375 IN.
DISCHARGE SIZE	N/A
DISCHARGE CONNECTION	BELL
SUCTION BELL DIA.	33.250 IN.
SUCTION CONNECTION	BELL
MAX. SPHERE SIZE	2.500 IN.
MAX. OPERATIONAL P.S.I.	250 (SPECIAL)

EFFICIENCY CORRECTION				
NUMBER OF BOWLS:	1	2		
CHANGE AS FOLLOWS:	-2	0		
CHANGE IN EFFICIENCY MAY AFFECT BOTH HEAD AND HORSEPOWER.				

PUMP MATERIAL EFFICIENCY CORRECTION				
	DUCTILE	BRONZE	NI-R	STAINLESS
IMPELLER MATERIAL:	-1	0	-1	-1
BOWL MATERIAL:	-1	-1	-1	-2

Performance based on pumping clear, fresh water at a temperature not over 85° F., free of gas, air or abrasives and with bowls properly adjusted and submerged. Performance curve reflects Hydraulic Institute tolerances and guidelines.



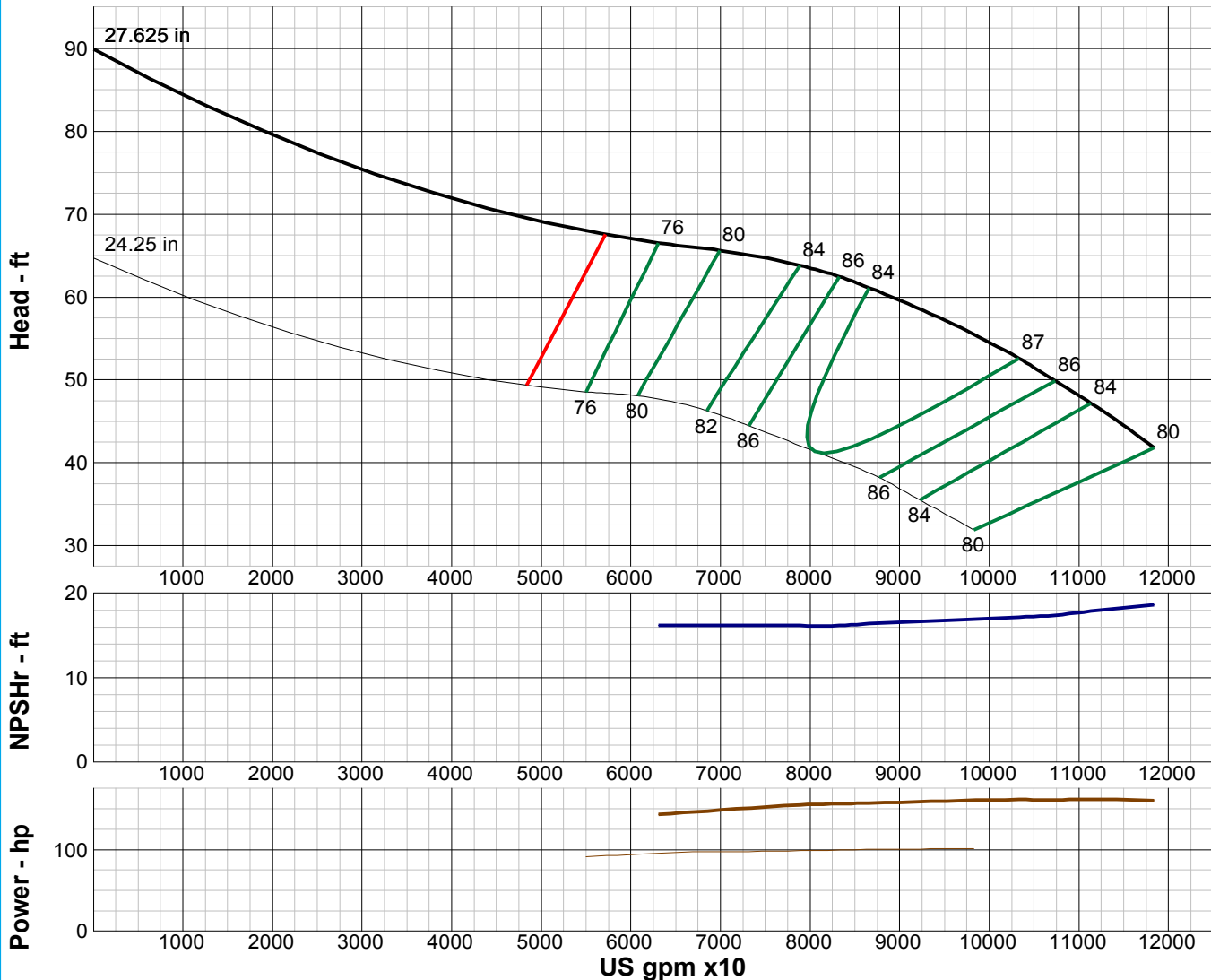
TURBINE PUMP CURVE

SINGLE STAGE PERFORMANCE

JANUARY 2010

480 SERIES

36LC 590 RPM



IMPELLER DATA

IMPELLER NUMBER	1927	Minimum submergence above eye of bottom impeller: 65 IN.
TYPE	ENCLOSED	
THRUST FACTOR	K=94.50	
EYE AREA	215 SQ. IN.	
WEIGHT	440 LB.	

FLANGED BOWL DATA

BOWL NUMBER	1909
BOWL MAX. DIAMETER	36.000 IN.
BOWL MIN. DIAMETER	36.000 IN.
MAX. NO. STAGES	2
ONE STAGE WEIGHT	4500 LB.
ADD STAGE WEIGHT	2000 LB.
STD. SHAFT DIA.	3.250 IN.
STD. LATERAL	1.250 IN.
DISCHARGE SIZE	N/A
DISCHARGE CONNECTION	FLG.
SUCTION BELL DIA.	42.000 IN.
SUCTION CONNECTION	BELL
MAX. SPHERE SIZE	2.500 IN.
MAX. OPERATIONAL P.S.I.	200 (SPECIAL)

EFFICIENCY CORRECTION

NUMBER OF BOWLS:	1	2	3		
CHANGE AS FOLLOWS:	-2	-1	0		
CHANGE IN EFFICIENCY MAY AFFECT BOTH HEAD AND HORSEPOWER.					

PUMP MATERIAL EFFICIENCY CORRECTION

	DUCTILE	BRONZE	NI-R	STAINLESS
IMPELLER MATERIAL:	-1	0	-1	-1
BOWL MATERIAL:	-1	-1	-1	-2

Performance based on pumping clear, fresh water at a temperature not over 85° F., free of gas, air or abrasives and with bowls properly adjusted and submerged. Performance curve reflects Hydraulic Institute tolerances and guidelines.



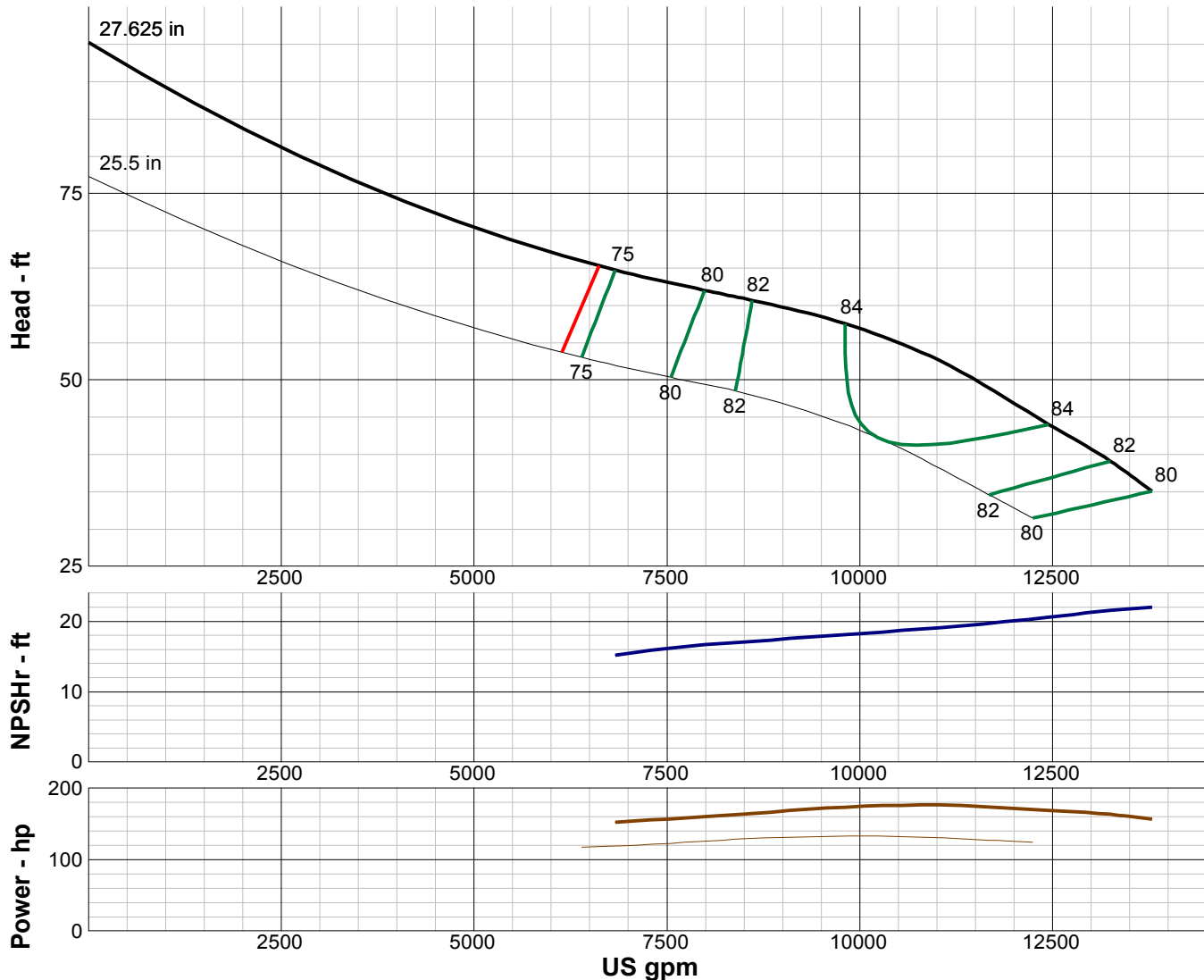
TURBINE PUMP CURVE

SINGLE STAGE PERFORMANCE

JANUARY 2010

480 SERIES

36MC 590 RPM



IMPELLER DATA

IMPELLER NUMBER	1936	Minimum submergence above eye of bottom impeller: 65 IN.
TYPE	ENCLOSED	
THRUST FACTOR	K=94.50	
EYE AREA	215 SQ. IN.	
WEIGHT	440 LB.	

EFFICIENCY CORRECTION

NUMBER OF BOWLS:	1	2	3		
CHANGE AS FOLLOWS:	-2	-1	0		
CHANGE IN EFFICIENCY MAY AFFECT BOTH HEAD AND HORSEPOWER.					

PUMP MATERIAL EFFICIENCY CORRECTION

	DUCTILE	BRONZE	NI-R	STAINLESS
IMPELLER MATERIAL:	-1	0	-1	-1
BOWL MATERIAL:	-1	-1	-1	-2

FLANGED BOWL DATA

BOWL NUMBER	1909
BOWL MAX. DIAMETER	36.000 IN.
BOWL MIN. DIAMETER	36.000 IN.
MAX. NO. STAGES	2
ONE STAGE WEIGHT	4500 LB.
ADD STAGE WEIGHT	2000 LB.
STD. SHAFT DIA.	3.250 IN.
STD. LATERAL	1.250 IN.
DISCHARGE SIZE	N/A
DISCHARGE CONNECTION	FLG.
SUCTION BELL DIA.	42.000 IN.
SUCTION CONNECTION	BELL
MAX. SPHERE SIZE	2.500 IN.
MAX. OPERATIONAL P.S.I.	200 (SPECIAL)

Performance based on pumping clear, fresh water at a temperature not over 85° F., free of gas, air or abrasives and with bowls properly adjusted and submerged. Performance curve reflects Hydraulic Institute tolerances and guidelines.



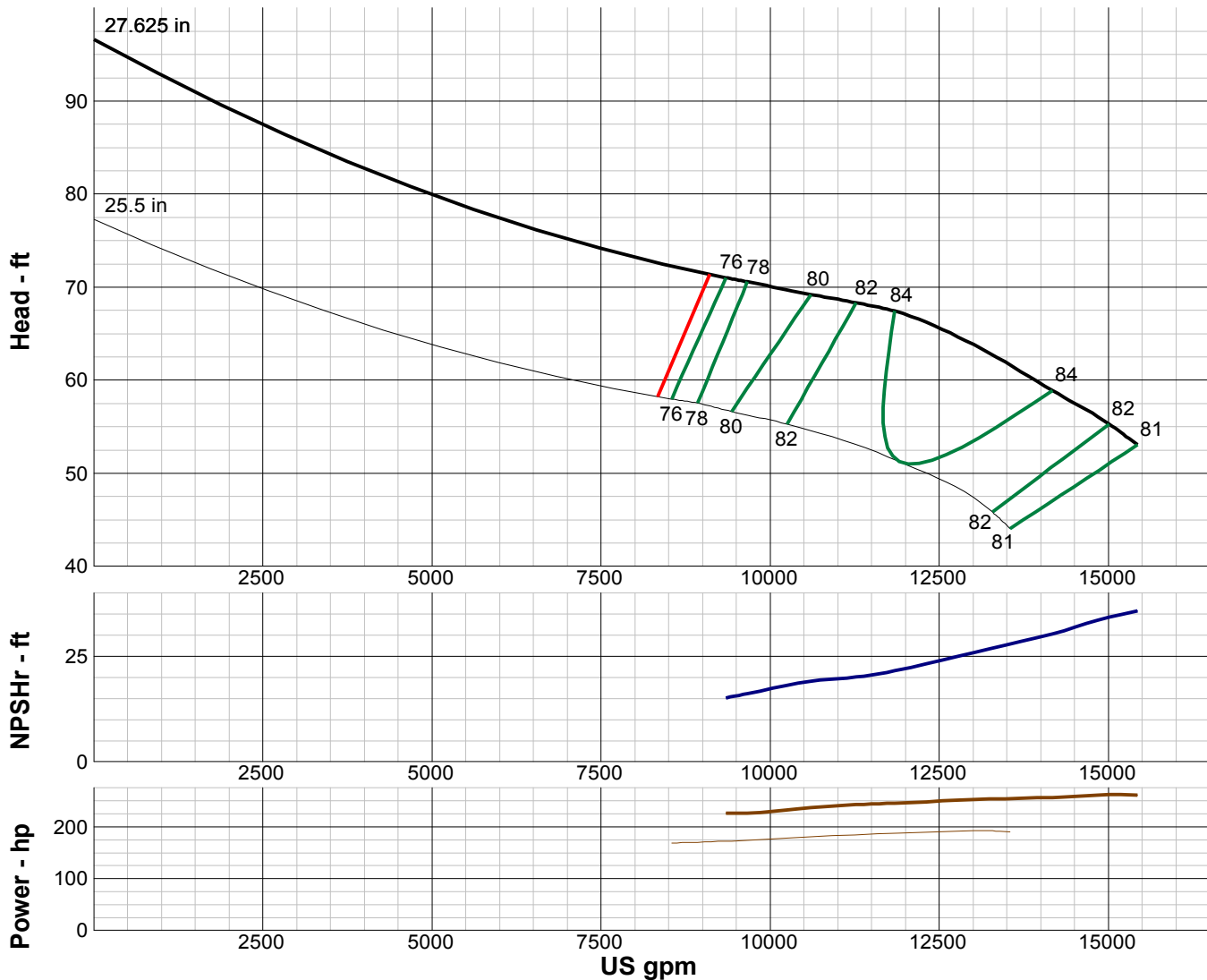
TURBINE PUMP CURVE

SINGLE STAGE PERFORMANCE

JANUARY 2010

480 SERIES

36HC 590 RPM



IMPELLER DATA		
IMPELLER NUMBER	1945	Minimum submergence above eye of bottom impeller: 65 IN.
TYPE	ENCLOSED	
THRUST FACTOR	K=94.50	
EYE AREA	215 SQ. IN.	
WEIGHT	440 LB.	

EFFICIENCY CORRECTION				
NUMBER OF BOWLS:	1	2	3	
CHANGE AS FOLLOWS:	-2	-1	0	
CHANGE IN EFFICIENCY MAY AFFECT BOTH HEAD AND HORSEPOWER.				

PUMP MATERIAL EFFICIENCY CORRECTION				
	DUCTILE	BRONZE	NI-R	STAINLESS
IMPELLER MATERIAL:	-1	0	-1	-1
BOWL MATERIAL:	-1	-1	-1	-2

FLANGED BOWL DATA	
BOWL NUMBER	1909
BOWL MAX. DIAMETER	36.000 IN.
BOWL MIN. DIAMETER	36.000 IN.
MAX. NO. STAGES	2
ONE STAGE WEIGHT	4500 LB.
ADD STAGE WEIGHT	2000 LB.
STD. SHAFT DIA.	3.250 IN.
STD. LATERAL	1.250 IN.
DISCHARGE SIZE	N/A
DISCHARGE CONNECTION	FLG.
SUCTION BELL DIA.	42.000 IN.
SUCTION CONNECTION	BELL
MAX. SPHERE SIZE	2.500 IN.
MAX. OPERATIONAL P.S.I.	200 (SPECIAL)

Performance based on pumping clear, fresh water at a temperature not over 85° F., free of gas, air or abrasives and with bowls properly adjusted and submerged. Performance curve reflects Hydraulic Institute tolerances and guidelines.



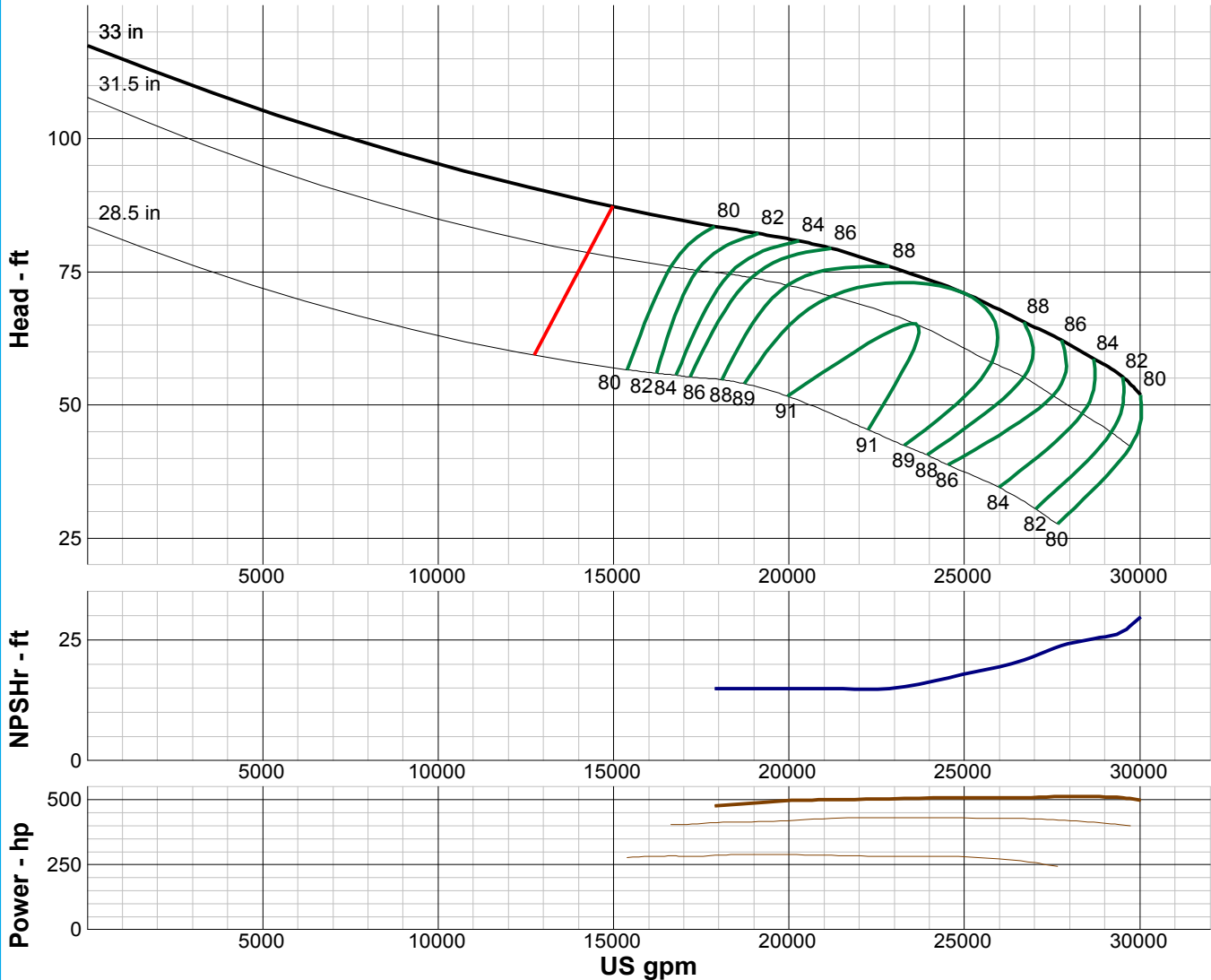
TURBINE PUMP CURVE

SINGLE STAGE PERFORMANCE

JANUARY 2010

480 SERIES

42MC 590 RPM



IMPELLER DATA

IMPELLER NUMBER	0244	Minimum submergence above eye of bottom impeller: 90 IN.
TYPE	ENCLOSED	
THRUST FACTOR	K=150.00	
EYE AREA	390 SQ. IN.	
WEIGHT	875 LB.	

EFFICIENCY CORRECTION

NUMBER OF BOWLS:	1	2			
CHANGE AS FOLLOWS:	-1	0			
CHANGE IN EFFICIENCY MAY AFFECT BOTH HEAD AND HORSEPOWER.					

PUMP MATERIAL EFFICIENCY CORRECTION

	DUCTILE	BRONZE	NI-R	STAINLESS
IMPELLER MATERIAL:	-1	0	-1	-1
BOWL MATERIAL:	-1	-1	-1	-2

FLANGED BOWL DATA

BOWL NUMBER	0242
BOWL MAX. DIAMETER	42.500 IN.
BOWL MIN. DIAMETER	42.500 IN.
MAX. NO. STAGES	3
ONE STAGE WEIGHT	5250 LB.
ADD STAGE WEIGHT	3550 LB.
STD. SHAFT DIA.	4.000 IN.
STD. LATERAL	1.125 IN.
DISCHARGE SIZE	N/A
DISCHARGE CONNECTION	FLG.
SUCTION BELL DIA.	48.000 IN.
SUCTION CONNECTION	BELL
MAX. SPHERE SIZE	3.500 IN.
MAX. OPERATIONAL P.S.I.	200 (SPECIAL)

Performance based on pumping clear, fresh water at a temperature not over 85° F., free of gas, air or abrasives and with bowls properly adjusted and submerged. Performance curve reflects Hydraulic Institute tolerances and guidelines.



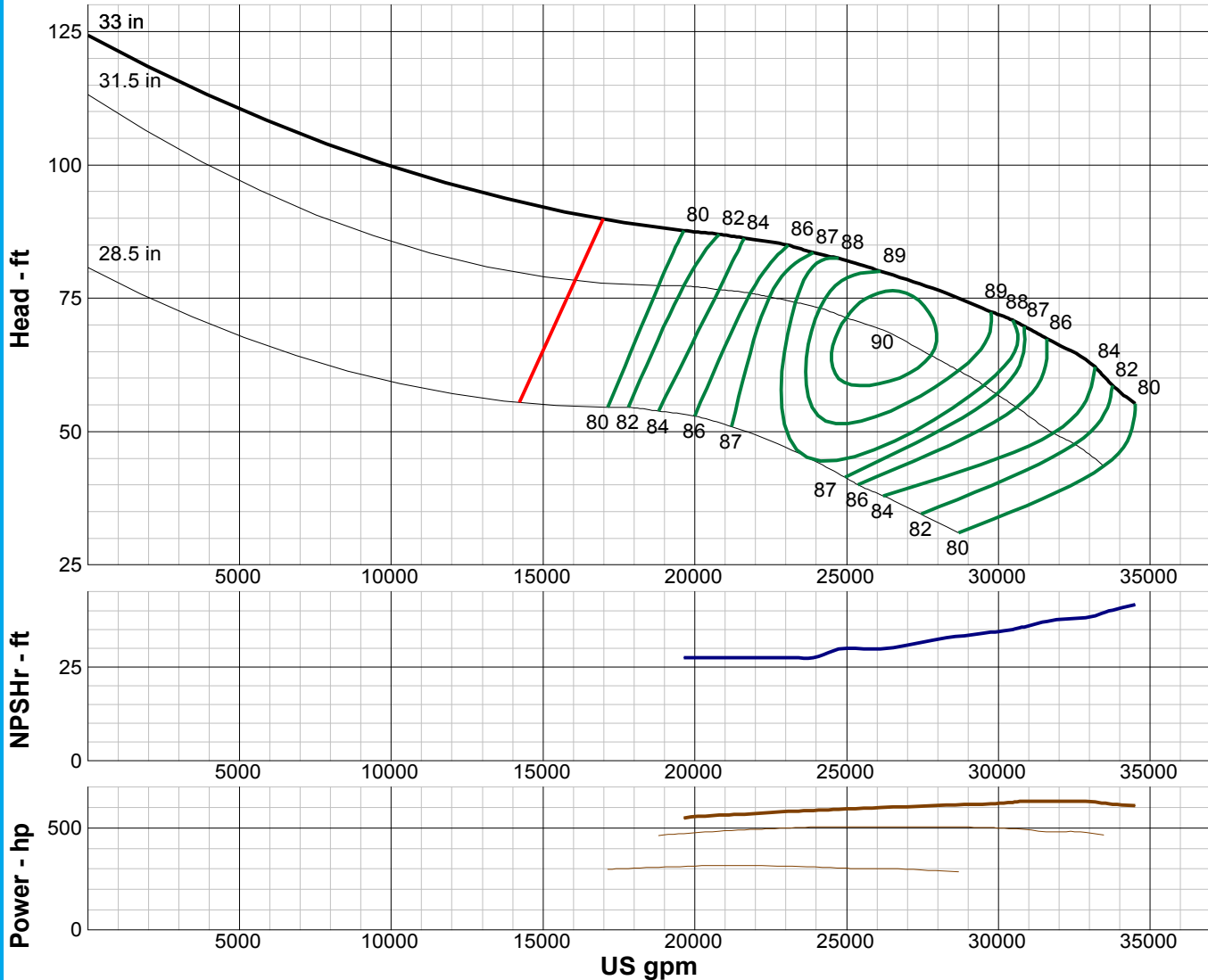
TURBINE PUMP CURVE

SINGLE STAGE PERFORMANCE

JANUARY 2010

480 SERIES

42HC 590 RPM



IMPELLER DATA

IMPELLER NUMBER	0245	Minimum submergence above eye of bottom impeller: 90 IN.
TYPE	ENCLOSED	
THRUST FACTOR	K=150.00	
EYE AREA	390 SQ. IN.	
WEIGHT	875 LB.	

EFFICIENCY CORRECTION

NUMBER OF BOWLS:	1	2			
CHANGE AS FOLLOWS:	-1	0			
CHANGE IN EFFICIENCY MAY AFFECT BOTH HEAD AND HORSEPOWER.					

PUMP MATERIAL EFFICIENCY CORRECTION

	DUCTILE	BRONZE	NI-R	STAINLESS
IMPELLER MATERIAL:	-1	0	-1	-1
BOWL MATERIAL:	-1	-1	-1	-2

FLANGED BOWL DATA

BOWL NUMBER	0242
BOWL MAX. DIAMETER	42.500 IN.
BOWL MIN. DIAMETER	42.500 IN.
MAX. NO. STAGES	3
ONE STAGE WEIGHT	5250 LB.
ADD STAGE WEIGHT	3550 LB.
STD. SHAFT DIA.	4.000 IN.
STD. LATERAL	1.125 IN.
DISCHARGE SIZE	N/A
DISCHARGE CONNECTION	FLG.
SUCTION BELL DIA.	48.000 IN.
SUCTION CONNECTION	BELL
MAX. SPHERE SIZE	3.500 IN.
MAX. OPERATIONAL P.S.I.	200 (SPECIAL)

Performance based on pumping clear, fresh water at a temperature not over 85° F., free of gas, air or abrasives and with bowls properly adjusted and submerged. Performance curve reflects Hydraulic Institute tolerances and guidelines.